

Northside Family Camp 2024

Hello, Northside Campers!!! Here are the details for our 2024 Family Camp at Camp Attitude!! We are so excited for Family Camp this year! It will be a great weekend of connection and fun! **Check-in:** You may arrive at Family Camp as early as 4:00 pm on 8/30/24. There will be a **check-in station** at the gate where someone will be located to give directions.

We will have signs on the doors & RV sites with your names on them. If you are a tent camper you may set up wherever you like within the tent site area, first come, first serve.

The road that goes past the premium RV sites, down to the cabins, over the basketball hoop area, and around to the tent sites and kitchen is for UNLOADING ONLY. Once you have unloaded your vehicle please move it to the parking area. The road will be closed for the weekend for a safe play area for kids. We will reopen it for checkout on Sunday.

What to bring:

What you pack is up to you and will vary depending on your sleeping quarter's accommodations. Please pack all of the regular things; clothes, toiletries, etc. Here are a few camp-specific recommendations:

- Bible and Journal
- Meals: **Bring** your Dinner for Friday, Breakfast & Lunch for Saturday, Breakfast for Sunday
- Snacks for between meals
- Cooking element (e.g. Camping stove)
- Utensils and Dishes
- Change of clothes for each day for each of your campers
- Sleeping bag/bedding (rooms, yurts, and bunk cabins have twin-sized beds)
- Towels
- Camp chairs
- Water bottle
- Cooler (yurts and cabins have a mini fridge)
- Flashlights
- Sunscreen/bug spray
- Swimsuit

Meal schedule: Meals Provided: Only dinner on Saturday and lunch on Sunday are provided (**see what to bring above**).

Please pack/plan accordingly. If your accommodations do not include a refrigerator (cabins and yurts have a mini fridge), please bring a cooler or use the camp fridge in the Pavilion. The kitchen in the pavilion has limited shared refrigerator space.

Friday night we will have an Ice Cream Social at 6:30 in the Pavilion to gather us all together!!!

Saturday Dinner will be provided: Hamburgers and Hot Dogs in the pavilion at 6:00 pm!

Camp is only 5-10 minutes from Sweet Home if you need to go to the grocery store or plan to eat out for breakfast and lunch.

Volunteer Assignments:

Volunteers are needed for cleaning the bathhouse, the pavilion, and for a final walk-through before we leave camp. Please check a box on the registration form or [email office@northside-albany.com](mailto:office@northside-albany.com).

General Housekeeping:

Housekeeping assignments will be provided when you arrive. It will be based on where you are staying and which amenities you are using.

Final details:

We will check out by 3:00 pm on Sunday (Monday Optional). Check-out instructions will be available at camp depending on your accommodation.

We have the camp to ourselves, but we would like to make it clear that at no point are we responsible for your children. There is a pond and the Santiam River runs behind the camp.

***PARENTS ARE RESPONSIBLE FOR THEIR CHILDREN AT ALL TIMES.**

***Only service animals are allowed**

Schedule:**Friday:**

4:00 pm Campers may begin to arrive
6:30 pm Ice Cream Social and Kickoff in Pavilion
7:00 pm Kid's Song with Matt and Hannah
7:00 pm Prayer Time with Pastor Jamey
10:00 pm Quiet Time

Saturday:

8:30 am Devotional Time - 3 Options: 1) Break away with your family and spend time together going over the family devotional provided or do your own, 2) Go off on your own and spend that time alone, or 3) Matt will lead a family devotions exercise you can bring your family to and he will give instructions and then give you time to practice the elements of the devotional time.
9:30 am - Group Game
10:30 am - Free Time
6:00 pm - Dinner in Pavilion (Burgers & Hot Dogs)
7:00 pm - Bonfire Worship and Prayer (If campfires are permitted in the area, otherwise in Pavilion)
10:00 pm - Quiet time

Sunday:

10:00 am - Church Service in and around Pavilion
11:30 am - Baptism
Noon - Lunch Sandwich Bar
2:00-3:00 Whole Camp Clean Up
Check out by 3:00 pm (Monday Optional)

Activities available all day:

Basketball, Volleyball, Horseshoes, Lawn Games, Playgrounds, and nearby Hiking trails. Foster Lake is just down the highway, and the Santiam River is accessible from camp from a rocky trail (bring your own fishing equipment - **POND IS CLOSED TO FISHING**). Please bring any board games, lawn games, or sports equipment, and see if you can get a game going!

Property Rules

Parking and Vehicles

- All vehicles must be parked in designated areas
- Parking on driveways and paths is prohibited
- Parking behind the kitchen is reserved for camp staff only
- The use of off-road/motorized recreational vehicles (ATV's, Scooters, Golf Carts, Hoverboards) is prohibited
- You must obey all safety laws in accordance with the State of Oregon concerning bicycles, skateboards, and any other recreational equipment.

Buildings/Grounds

- Buildings and grounds are to be left clean and orderly
- Use of shaving cream, toothpaste etc. is allowed in bathrooms only
- "Fights" involving water, or any other liquid is not allowed in any of the buildings
- Any damage to the buildings, real property or facilities above normal wear-and-tear shall be noted. Renter shall be held responsible for additional costs.
- The use of fire pits/open cooking strictly permitted under open areas (**SUBJECT TO FIRE BAN**). Prohibited under all overhangs including porches, tents, low hanging trees, inside buildings, rooftops, etc. due to fire hazard.

Smoking/ Vaping/Alcohol/Drugs/Firearms

- Alcohol is not allowed on the Property at any time
- Illegal drugs and marijuana (with the exception of medicinal marijuana) are not allowed on the Property at any time
- The Property is a SMOKE AND VAPE FREE environment. Smoking is not permitted on the grounds or in any building. Smoking is allowed only in the designated smoking area (off property)
- Firearms, fireworks, or any other pyrotechnic displays are not permitted on the Property

Garbage/Recycling

- All garbage/refuse must be deposited in the designated trash cans
- Recyclable materials must be deposited in the designated recycle receptacles

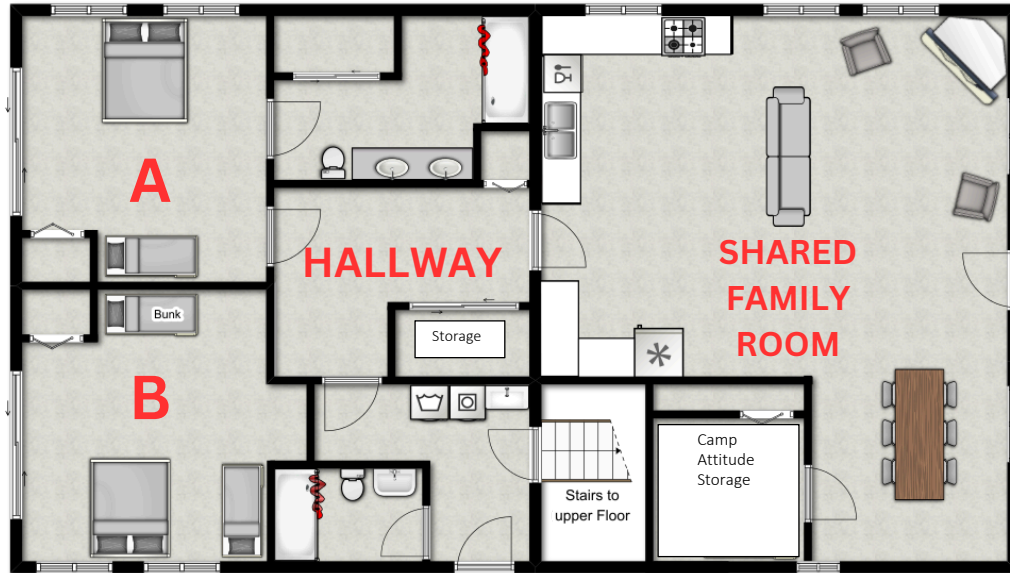
PETS

- ***Pets, with the exception of licensed service animals, are not allowed. Licensed service animals must be kept on a leash at all times***
- ***Please pick up after your licensed service animal***

Conduct on the Property

- We expect all guests to be respectful of each other at all times
- Quiet hours on the property are from 10:00 pm to 6:00 am everyday
- Pond is closed during all rentals unless alternative arrangements have been made; separate fees may be required.
- Use of any bodies of water are at the renters' own risk.
- Immoral conduct is not allowed on the Property

Staff House, Floor 1 (A, B)

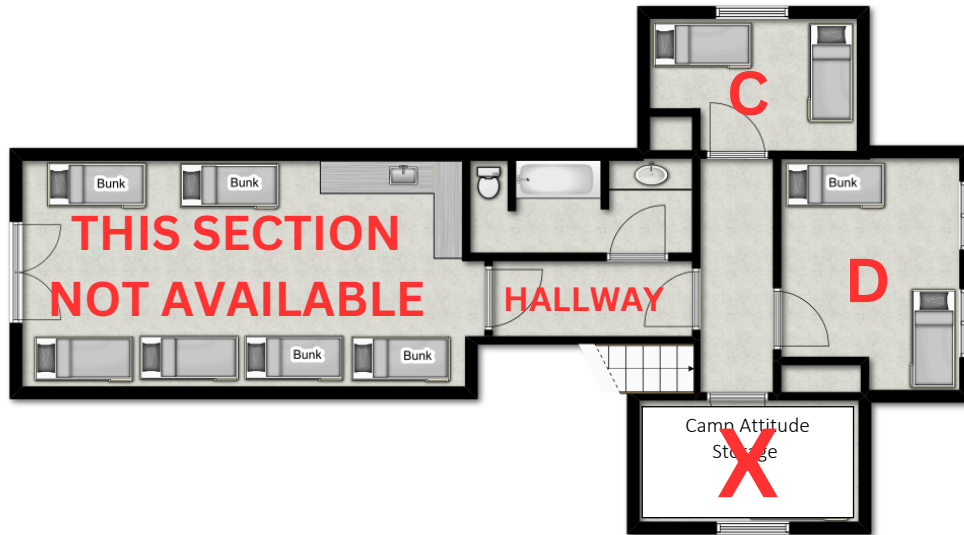


Amenities:

- First floor can sleep up to 8 individuals
- Kitchen for small to medium sized groups
- Laundry room
 - Two bathrooms with wheelchair accessible showers
- Small dining and living room
- Heating and air conditioning

*Exact placement of furniture not guaranteed and subject to change

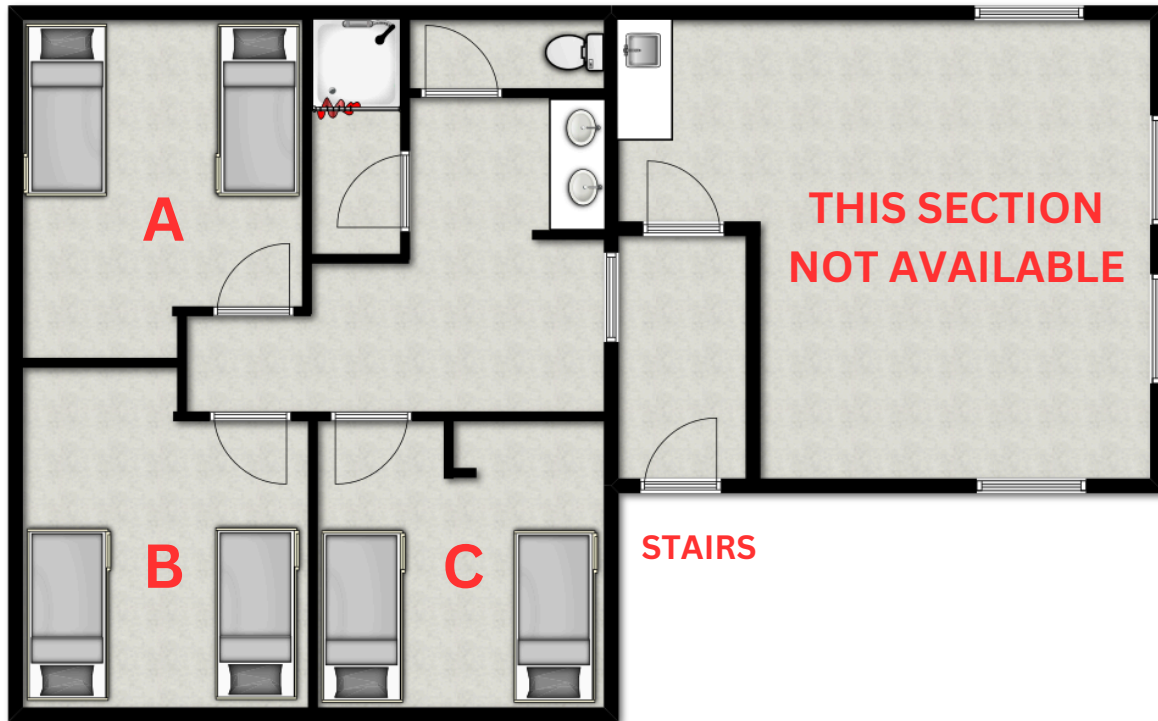
Staff House, Floor 2 (C,D)



- The second floor can sleep up to 15 people
- Custom-made twin-sized bunk beds
- Mattresses are a poly-fiber core and with an easy to clean, antibacterial, and waterproof vinyl cover
- Heating
- Shared bathroom with a shower
- Kitchenette with sink and storage

*Exact placement of furniture not guaranteed and subject to change

Smiley Shack (A, B, C)



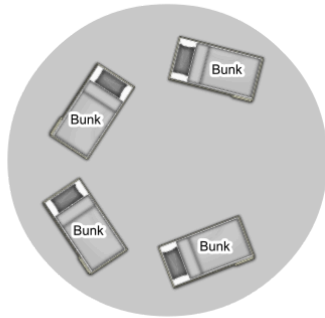
Amenities

- This facility is located above the camp office and store (the Smiley Shack). It requires climbing a flight of stairs.
- Each unit sleeps 2
- There are no bunk beds just single twin beds
- Shared bathroom with an open sink layout and an individual room for toilet and shower
- Heating and Air Conditioning

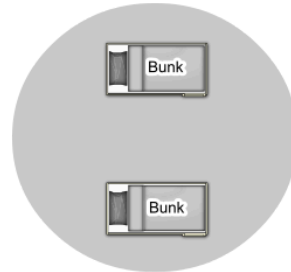
*Exact placement of furniture not guaranteed and subject to change

Yurts

4 Large Yurts



1 Small Yurt

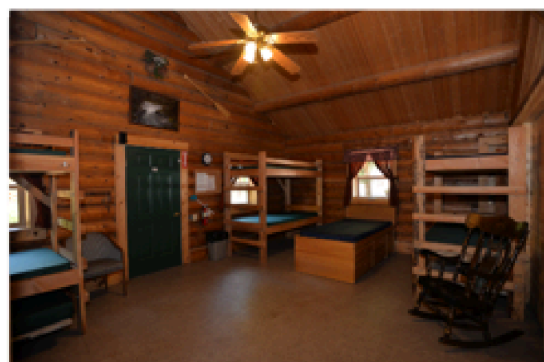
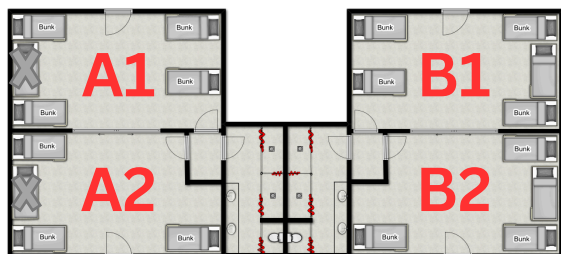


Amenities:

- Accessible via wheelchair ramp
 - Two or four custom-made twin-sized bunk beds designed with extra space between top and bottom bunk provides ease of transfer for individuals that utilize a wheelchair
 - Mattresses are a poly-fiber core and with an easy to clean, antibacterial, and waterproof vinyl cover
- Paved walking and rolling paths leading to the bathhouse
- Microwave
- Mini fridge
- Locking safe
- Heater
- Fan

*Exact placement of furniture not guaranteed and subject to change

Cabins (A1, A2, B1, B2)

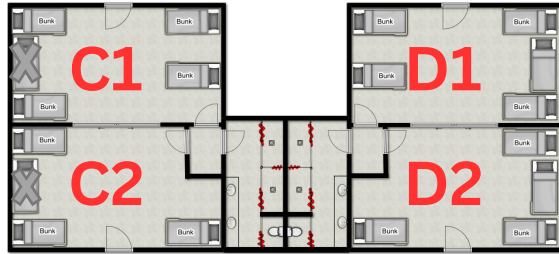


Amenities:

- 6 fully wheelchair accessible cabins on campus
 - Each cabin has a divider in the middle. Thus, depending on group size, you can have 6 large cabins or 12 smaller cabins
- Each side is connected by a shared bathroom
 - Three or four custom-made twin-sized bunk beds designed with extra space between top and bottom bunk provides ease of transfer for individuals that utilize a wheelchair
 - Mattresses are a poly-fiber core and with an easy to clean, antibacterial, and waterproof vinyl cover
- Microwave
- Mini fridge
- Locking safe
- Heater
- Fan

*Exact placement of furniture not guaranteed and subject to change

Cabins (C1, C2, D1, D2)

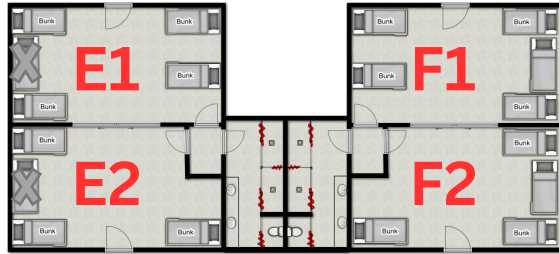


Amenities:

- 6 fully wheelchair accessible cabins on campus
 - Each cabin has a divider in the middle. Thus, depending on group size, you can have 6 large cabins or 12 smaller cabins
- Each side is connected by a shared bathroom
 - Three or four custom-made twin-sized bunk beds designed with extra space between top and bottom bunk provides ease of transfer for individuals that utilize a wheelchair
 - Mattresses are a poly-fiber core and with an easy to clean, antibacterial, and waterproof vinyl cover
- Microwave
- Mini fridge
- Locking safe
- Heater
- Fan

*Exact placement of furniture not guaranteed and subject to change

Cabins (E1, E2, F1, F2)

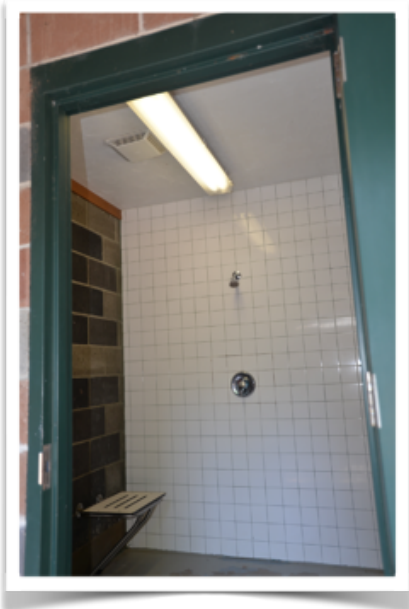


Amenities:

- 6 fully wheelchair accessible cabins on campus
 - Each cabin has a divider in the middle. Thus, depending on group size, you can have 6 large cabins or 12 smaller cabins
- Each side is connected by a shared bathroom
 - Three or four custom-made twin-sized bunk beds designed with extra space between top and bottom bunk provides ease of transfer for individuals that utilize a wheelchair
 - Mattresses are a poly-fiber core and with an easy to clean, antibacterial, and waterproof vinyl cover
- Microwave
- Mini fridge
- Locking safe
- Heater
- Fan

*Exact placement of furniture not guaranteed and subject to change

Bath House (Public Restrooms)



Amenities

- 7 showers
- 4 women's and 4 men's accessible bathroom stalls
- plenty of counter space

*Exact placement of furniture not guaranteed and subject to change

Pavilion

Amenities

- Open air multi-purpose space
- Picnic tables and attached commercial kitchen for dining.
- Stage and projector screen for general sessions.
- Overhead cover from the weather.



*Exact placement of furniture not guaranteed and subject to change

Nurses Station

Secure space for medical professionals to treat minor injuries or ailments



*Exact placement of furniture not guaranteed and subject to change

Craft House

Amenities

- Multipurpose Room
 - Table and Chairs provided
 - Projector and screen provided
- Heat



*Exact placement of furniture not guaranteed and subject to change